

# CCNP Study Aids:

Deciduous Shrubs that May Appear on the CCNP exam.

**These materials were donated by the author to the CNGA in recognition of scholarships given by the Colorado Nursery Research and Education Foundation (CNREF) in support of students at FRCC.**

**If you find these materials helpful, please donate to CNREF today!**

Non-exclusive use of the following photos/materials is hereby granted to the Colorado Nursery & Greenhouse Association for use by individuals seeking Certification as a Colorado Certified Nursery Professional. The Author reserves all rights to these Images/Materials. Users of this presentation do not acquire any copyright, ownership or equivalent rights in or to any Images. Users must contact the Author if they wish to use any of these photos for other purposes.

Author:

Ray Daugherty, CCNP No. 369,

Horticulture & Landscape Technologies Faculty, Front Range Community College

rdaugh4908@aol.com or Tel. 303-246-4414.

*Amelanchier alnifolia*

(am-el-AN-keer all-neh-FO-lee-ah)

Saskatoon Serviceberry





*Amorpha canescens*

(ah-MOR-fah kan-ESS-senz)

Leadplant Amorpha



*Aronia melanocarpa*

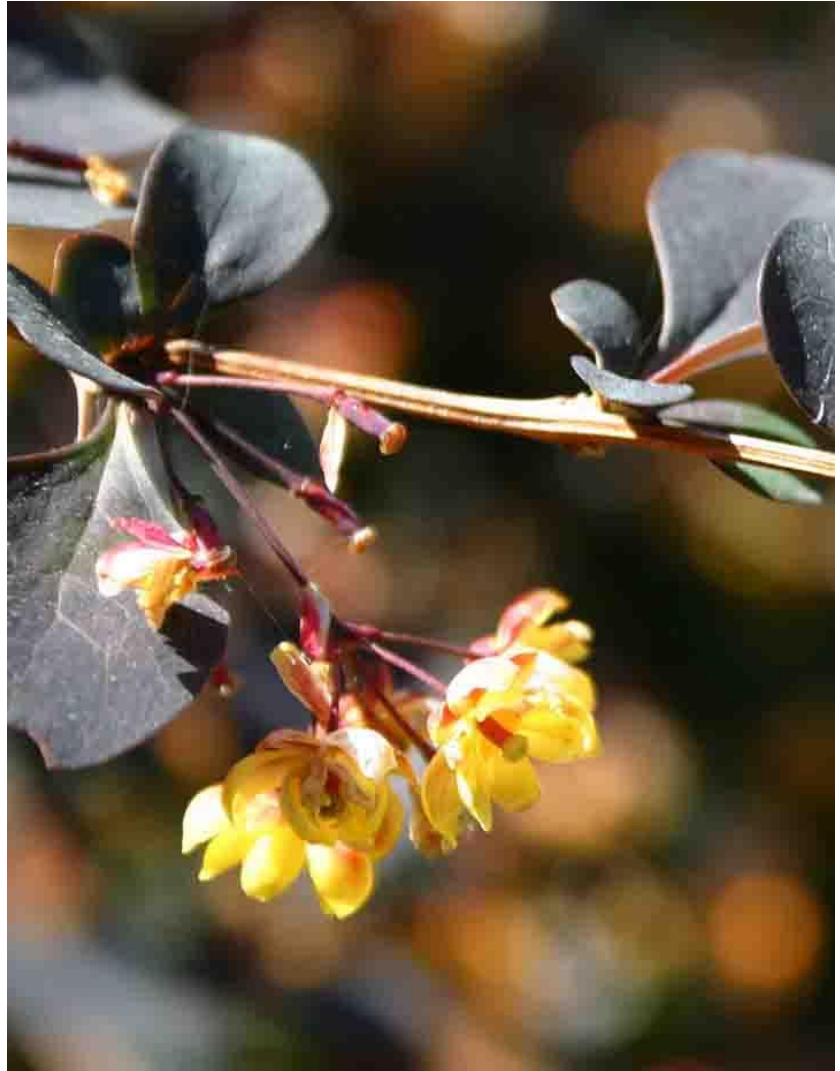
(ah-ROE-nee-ah mel-an-oh-KAR-pah)

Black Chokeberry





*Berberis thunbergii*  
(BER-ber-iss thun-BER-jee-eye)  
Japanese Barberry



© Ray Daugherty

*Buddleja alternifolia*

(BUD-lee-ah all-ter-nih-FOE-lee-ah)

Fountain Butterfly-bush





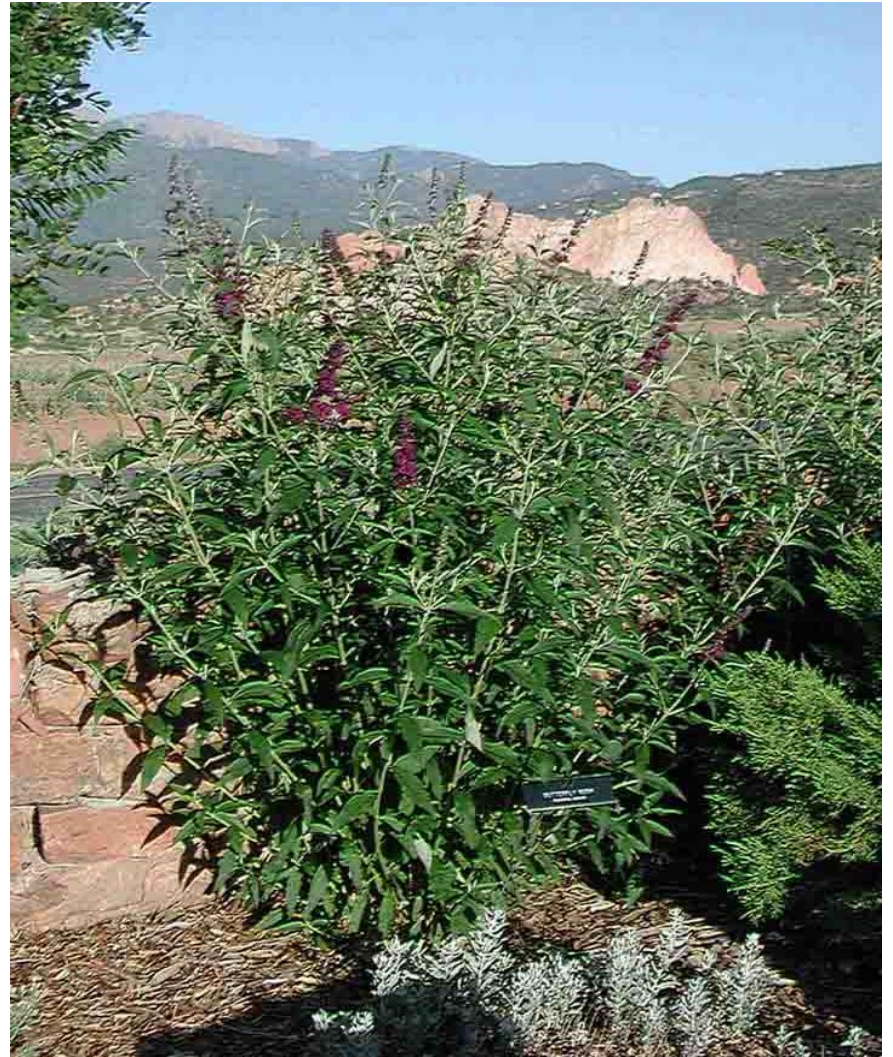
© Ray Daugherty



*Buddleja davidii*

(BUD-lee-ah dah-VID-ee-eye)

Butterfly bush



*Caragana arborescens*

(kare-ah-GAY-nah ar-bor-RES-senz)

Siberian Peashrub





© Ray Daugherty

*Caryopteris* × *clandonensis*

(kare-ee-OP-ter-iss klan-don-EN-sis)

Blue Mist Spirea



*Cercocarpus montanus*  
(ser-koe-KAR-pus mon-TAN-us)  
Mountain Mahogany







*Chaenomeles* spp.  
(kay-NOM-el-eez)  
Flowering Quince



© Ray Daugherty

*Chamaebatiaria millefolium*

(KAM-ah-bah-tee-er-ee-ah mill-ah-FO-lee-um)

Fernbush



© Ray Daugherty

*Chrysothamnus nauseosus*

( kry-so-THAM-nus naw-zee-OH-sus)

Rabbitbrush





© Ray Daugherty

*Cornus sericea*

(KOR-nus ser-REE-see-ah)

Redtwig and Yellowtwig Dogwood



© Ray Daugherty



*Cotinus coggygria*

(koe-TY-nus koe-GIG-ree-ah)

Common Smoke Tree



*Cotoneaster apiculatus*

(kah-TONE-ee-ass-ter ah-pik-yew-LAY-tus)

Cranberry Cotoneaster





*Cotoneaster lucidus*

(kah-TONE-ee-ass-ter LEW-si-diss)

Hedge or Peking Cotoneaster





© Ray Daugherty

*Daphne × burkwoodii*

(DAF-nee burk-WOOD-ee-eye)

Burkwood Daphne







*Euonymus alatus*

(yew-ON-ih-mus ah-LAY-tus)

Winged Euonymus or Burning Bush



*Euonymus alatus* 'Compactus'  
(yew-ON-ih-mus ah-LAY-tus)  
Dwarf Burning Bush



© Ray Daugherty



*Fallugia paradoxa*

(fal-LOO-gee-ah pare-ah-DOX-ah)

Apache Plume



*Forestiera neomexicana*

(for-ES-tee-er-ah nee-oh-mex-ee-KAH-nah)

New Mexico Privet





© Ray Daugherty



*Forsythia* spp.  
(for-SITH-ee-ah)  
Garden Forsythia



*Frangula alnus*

(FRAN-joo-lah ul-NUS)

Glossy Buckthorn



© Ray Daugherty



*Hibiscus syriacus*

(hy-BIS-kus seer-ee-AY-kus)

Rose of Sharon or Shrub Althea



*Hydrangea arborescens* 'Annabelle'  
(hy-DRAIN-jah ar-bor-RES-senz )  
Annabelle Smooth Hydrangea







*Hydrangea paniculata* 'Grandiflora'  
(hy-DRAIN-jah pah-nik-yew-LAY-tah)  
Pee Gee Hydrangea



*Ligustrum × vicaryi*

(lih-GUS-trum vih-KAR-ee-eye)

Golden Vicary Privet







*Ligustrum vulgare* 'Cheyenne'  
(lih-GUS-trum vul-GAR-ay)  
Cheyenne Privet



*Lonicera korolkowii*

(lon-ISS-er-ah kor-ul-KOW-ee-eye)

Blueleaf Honeysuckle



© Ray Daugherty



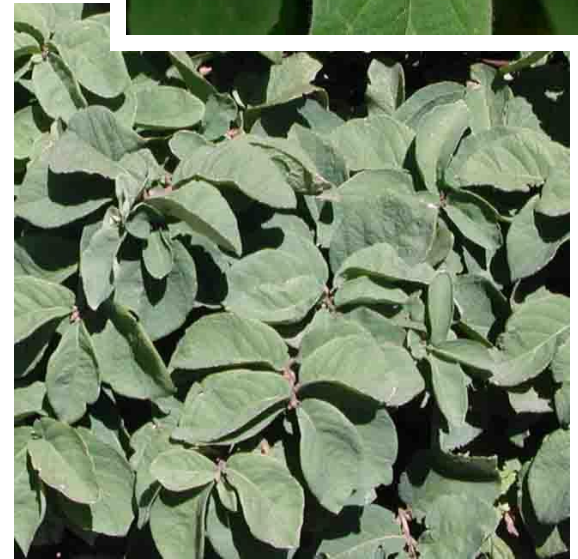
*Lonicera tatarica*

(lon-ISS-er-ah tah-TAR-ih-kah)

Tatarian Honeysuckle



*Lonicera* × *xylosteoides* 'Emerald Mound'  
(lon-ISS-er-ah zye-low-STAY-oy-deez)  
Emerald Mound Honeysuckle

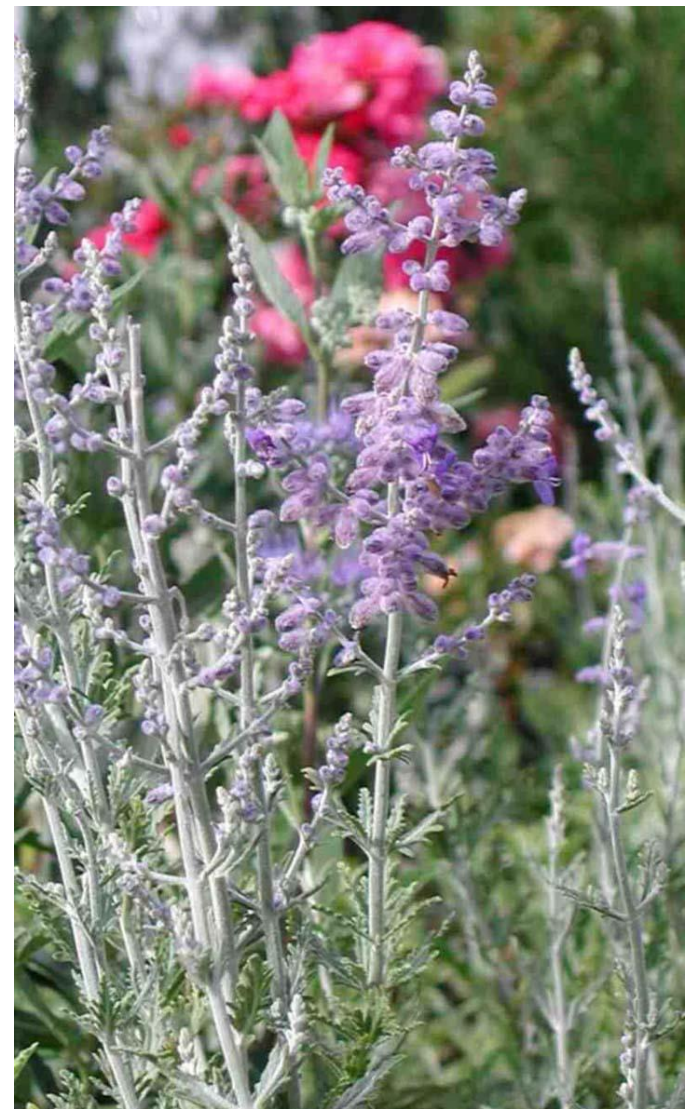




*Perovskia atriplicifolia*

(per-OV-skee-ah ah-trih-pliss-ih-FOE-lee-ah)

Russian Sage



© Ray Daugherty

*Philadelphus* spp.

(fil-ah-DEL-fus)

Mockorange







*Physocarpus opulifolius*

(fy-so-KAR-pus op-yew-lih-FOE-lee-us)

Common Ninebark



*Potentilla fruticosa*

(poe-ten-TIL-lah fru-tih-KOE-sah)

Shrubby Cinquefoil





*Prunus besseyi*

(PREW-nus BEH-see-eye)

Western Sandcherry, Bessey Cherry



*Prunus × cistena*

(PREW-nus sis-TEE-nah)

Purple Leaf Sand Cherry





*Prunus tomentosa*

(PREW-nus toe-men-TOE-sah)

Nanking or Manchu Cherry



*Rhus glabra*  
(rus GLAB-rah)  
Smooth Sumac







*Rhus trilobata*

(rus try-loe-BAY-tuh )

three-leaf sumac



*Rhus typhina*  
(rus ty-FEE-nah)  
Staghorn Sumac



© Ray Daugherty

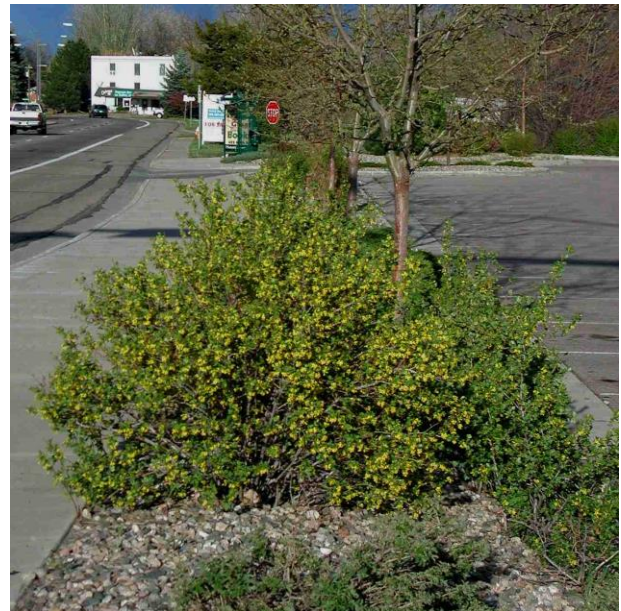


*Ribes alpinum*  
(RY-beez al-PINE-um)  
Alpine Currant



*Ribes aureum*  
(RY-beez AW-ree-um)  
Golden Currant







*Rosa foetida*

(ROE-sah FEH-tih-dah)

Austrian Brier Rose



*Rosa glauca*

(ROE-sah GLOK-ah)

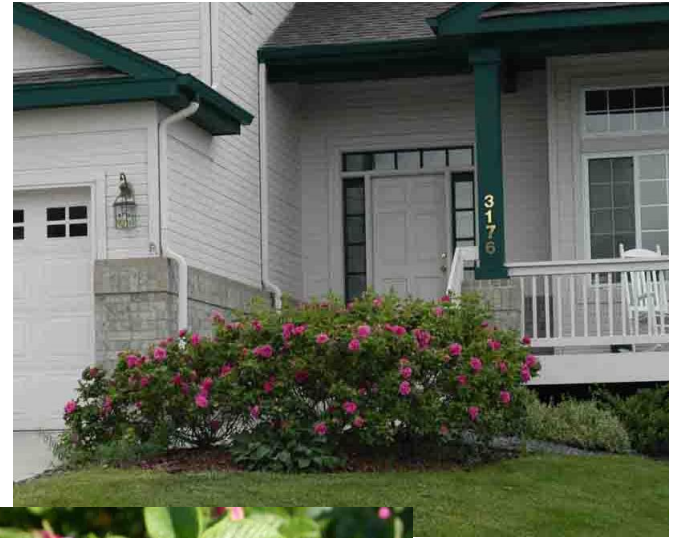
Red Leaf Rose







*Rosa rugosa*  
(ROE-sah roo-GO-sah)  
Rugosa Rose



*Rubus deliciosus*

(REW-bus duh-LEE-see-oh-sus)

Boulder Raspberry

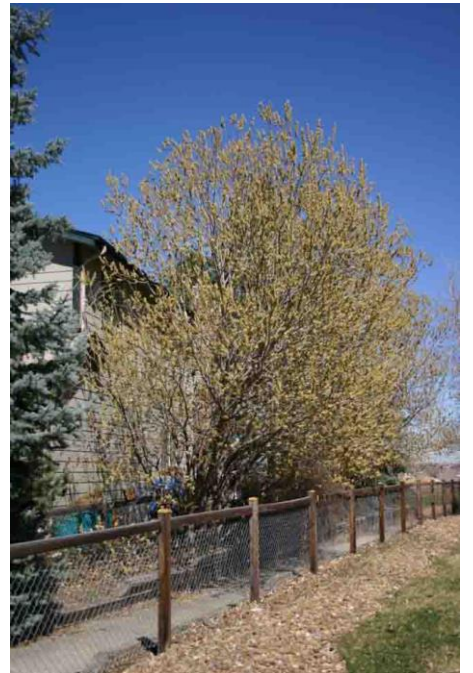




*Salix caprea*

(SAY-lix CAP-ree-ah)

Pussy Willow



*Salix exigua*

(SAY-lix ex-ZIH-joo-ah)

Coyote Willow



© Ray Daugherty



*Salix irrorata*

(SAY-lix ear-row-RAH-tah)

Bluestem Willow



© Ray Daugherty

*Salix purpurea*  
(SAY-lix per-per-EE-ah)  
Arctic Willow



© Ray Daugherty



*Sambucus canadensis*

(sam-BOO-kus kan-ah-DEN-sis)

American Elder



*Shepherdia argentea*

(shah-PER-dee-ah ar-JEN-tee-ah)

Buffaloberry





*Sorbaria sorbifolia*

(sor-BER-ee-ah sor-bah-FO-lee-ah)

Ural False Spirea



*Spiraea × bumalda and Spiraea japonica*  
(spy-REE-ah boo-MAL-dah / juh-PON-i-ka )  
Bumald Spirea





*Spiraea nipponica* 'Snowmound'  
(spy-REE-ah nip-PON-ih-kah)  
Snowmound Spirea



© Ray Daugherty

*Spiraea* × *vanhouttei*  
(spy-REE-ah van-HOO-tee-eye)  
Vanhoutte Spirea





*Symphoricarpos albus*  
(sim-for-ih-KAR-pos AL-bus)  
Common Snowberry



*Symphoricarpos* × *chenaultii* 'Hancock'  
(sim-for-ih-KAR-pos CHIN-awl-tee-eye)  
Hancock Coralberry



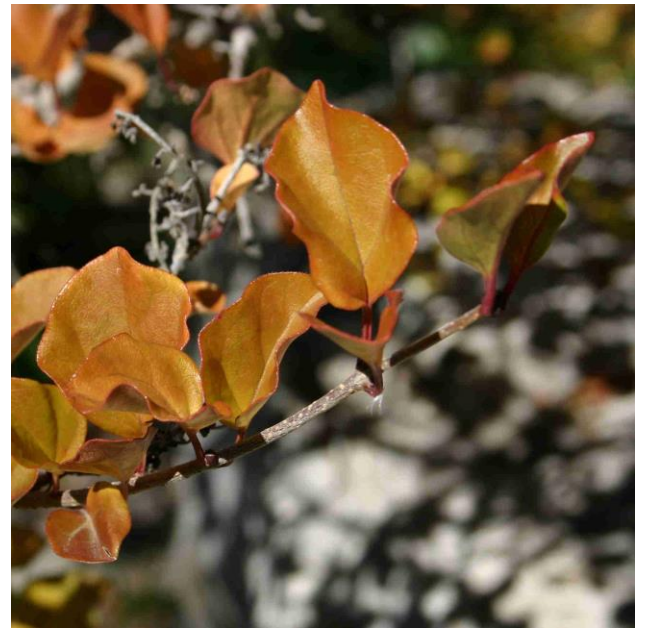


*Syringa × chinensis*  
(sy-RIN-gah chin-EN-sis)  
Chinese Lilac



*Syringa meyeri*  
(suh-RIN-gah MY-er-eye)  
Korean Lilac







*Syringa patula* 'Miss Kim'  
(suh-RIN-gah PAT-yew-lah)  
Miss Kim Lilac



*Syringa × prestoniae*

(sy-RIN-gah press-TONE-ee-aye)

Canadian Lilac





*Syringa vulgaris*  
(sy-RIN-gah vul-GAR-is)  
Common Lilac



*Viburnum* × *burkwoodii*  
(vy-BURN-um berk-WOOD-ee-eye)  
Burkwood Viburnum



© Ray Daugherty



*Viburnum lantana*  
(vy-BURN-um lan-TAN-ah)  
Wayfaring Tree Viburnum



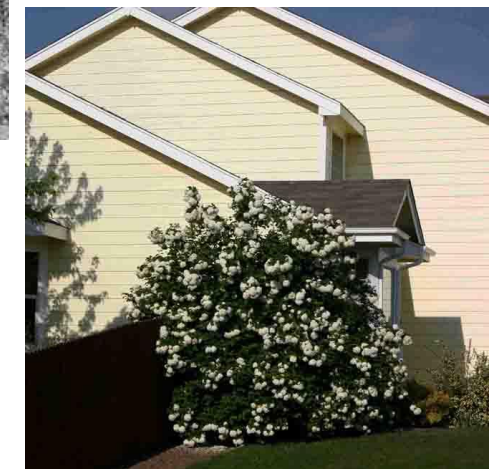
*Viburnum lentago*  
(vy-BURN-um lin-TAY-go)  
Nannyberry Viburnum



© Ray Daugherty



*Viburnum opulus*  
(vy-BURN-um OP-yew-lus)  
European Cranberrybush Viburnum



*Viburnum trilobum*  
(vy-BURN-um try-LOW-bum)  
American Cranberry Viburnum





*Viburnum* × *rhytidophylloides* 'Alleghany'  
(vy-BURN-um rye-tih-doe-fye-LOY-deez)  
Alleghany Viburnum



*Weigela florida*

(wy-JEE-lah FLOOR-ih-dah)

Weigela

