

# Evergreens Shrubs that May Appear on the CCNP Exam.

# CCNP Study Aids:

Evergreen Shrubs that May Appear on the CCNP exam.

These materials were donated by the author to the CNGA in recognition of scholarships given by the Colorado Nursery Research and Education Foundation (CNREF) in support of students at FRCC.

**If you find these materials helpful, please donate to CNREF today!**

Non-exclusive use of the following photos/materials is hereby granted to the Colorado Nursery & Greenhouse Association for use by individuals seeking Certification as a Colorado Certified Nursery Professional. The Author reserves all rights to these Images/Materials. Users of this presentation do not acquire any copyright, ownership or equivalent rights in or to any Images. Users must contact the Author if they wish to use any of these photos for other purposes.

## Author:

Ray Daugherty, CCNP No. 369,  
Horticulture & Landscape Technologies Faculty, Front Range Community College  
rdaugh4908@aol.com or Tel. 303-246-4414.

*Arctostaphylos × coloradensis*

(ark-toe-STAF-il-lohs kol-low-rah-DEN-sis)

Pine Mat Manzanita



*Arctostaphylos uva-ursi*

(ark-toe-STAF-il-lohs oo-vah-ER-see)

Bearberry or Kinnikinick



*Artemisia tridentata*

(ar-tem-EE-zsa try-den-TAH-tah)

Big Sagebrush



© Ray Daugherty



*Buxus* spp.

(BUKS-us)

Common Box or Boxwood



*Cercocarpus ledifolius*

(ser-koe-KAR-pus led-ih-FO-lee-us)

Curleaf Mountain Mahogany



*Cytisus* spp.  
(sih-TYE-sis)  
Broom



*Ephedra* spp.  
(ef-ED-drah)  
Joint Fir





*Euonymus fortunei* 'Emerald Gaiety'  
(yew-ON-ih-mus for-TOON-ee-eye)  
Emerald Gaiety Euonymus



*Euonymus fortunei* var. *coloratus*  
(yew-ON-ih-mus for-TOON-ee-eye)  
Purpleleaf Wintercreeper



*Euonymus kiautschovicus* 'Manhattan'  
(yew-ON-ih-mus kye-oh-show-VYE-kus)  
Manhattan Euonymus



*Ilex × meserveae*

(EYE-leks mez-ERV-ee-ay)

Meserve Hybrid Holly



© Ray Daugherty



*Juniperus* × *pfitzeriana* 'Wilhelm Pfitzer'  
(joo-NIP-er-us Fitz-ER-ee-ay-nuh)  
Pfitzer Juniper



© Ray Daugherty

*Juniperus* × *pfitzeriana* 'Sea Green'  
(joo-NIP-er-us Fitz-ER-ee-ay-nuh)  
Sea Green Juniper



© Ray Daugherty

*Juniperus horizontalis* 'Blue Chip'  
(joo-NIP-er-us hor-ih-zon-TAL-iss)  
Blue Chip Juniper



© Ray Daugherty

*Juniperus horizontalis* 'Prince of Wales'  
(joo-NIP-er-us hor-ih-zon-TAL-iss)  
Prince of Wales Juniper





*Juniperus horizontalis* 'Wiltonii'  
(joo-NIP-er-us hor-ih-zon-TAL-iss)  
Blue Rug Juniper



*Juniperus procumbens* 'Green Mound'  
(*joo-NIP-er-us PRO-come-bins*)  
Green Mound Juniper



*Juniperus sabina* 'Broadmoor'  
(joo-NIP-er-us suh-BEAN-uh)  
Broadmoor Juniper



© Ray Daugherty

*Juniperus sabina* 'Buffalo'  
(joo-NIP-er-us suh-BEAN-uh)  
Buffalo Juniper



© Ray Daugherty



*Juniperus sabina* var. *tamariscifolia*

(joo-NIP-er-us suh-BEAN-uh tam-ar-isk-uh-FOH-lee-uh)

Tam

Juniper



© Ray Daugherty

*Juniperus squamata* 'Blue Star'  
(joo-NIP-er-us skwam-AY-tah)  
Blue Star Flaky Juniper



*Mahonia aquifolium*

(mah-HOE-nee-ah ak-wih-FOE-lee-um)

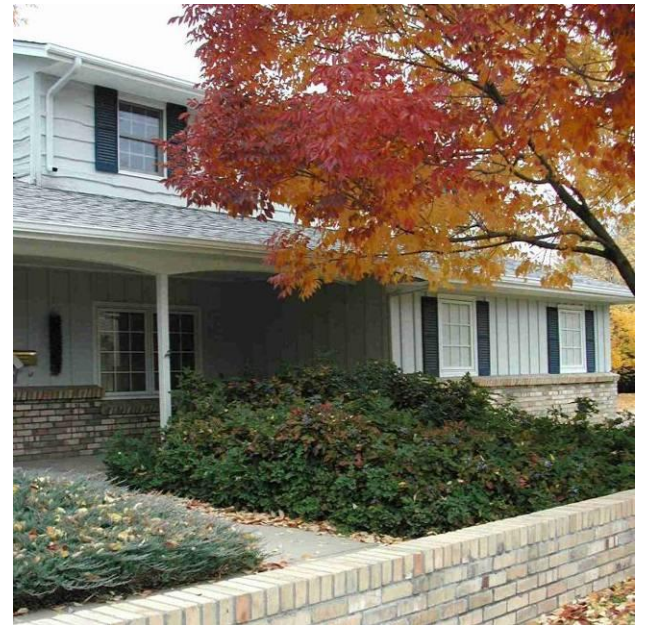
Oregon Grape Holly



*Mahonia repens*

(mah-HOE-nee-ah REH-pens)

Creeping Oregon Grape Holly





*Pyracantha* spp.  
(py-rah-KAN-thah)  
Firethorn



*Rhododendron 'P.J.M'*  
(roe-doe-DEN-dron 'P.J.M.')

P.J.M. Rhododendron



© Ray Daugherty

*Taxus × media*  
(TAX-us MEE-dee-ah)  
Yew



© Ray Daugherty

*Yucca baccata*  
(YUK-ah bah-KAH-tah)  
Banana Yucca





*Yucca glauca*  
(YUK-ah GLOCK-ah)  
Soapweed Yucca



*Yucca filamentosa*  
(YUK-ah fil-ah-men-TOE-sah)  
Adams Needle



© Ray Daugherty