

CCNP Study Aids:

Ornamental Trees that May Appear on the CCNP exam.

These materials were donated by the author to the CNGA in recognition of scholarships given by the Colorado Nursery Research and Education Foundation (CNREF) in support of students at FRCC.

If you find these materials helpful, please donate to CNREF today!

Non-exclusive use of the following photos/materials is hereby granted to the Colorado Nursery & Greenhouse Association for use by individuals seeking Certification as a Colorado Certified Nursery Professional. The Author reserves all rights to these Images/Materials. Users of this presentation do not acquire any copyright, ownership or equivalent rights in or to any Images. Users must contact the Author if they wish to use any of these photos for other purposes.

Author:

Ray Daugherty, CCNP No. 369,

Horticulture & Landscape Technologies Faculty, Front Range Community College

rdaugh4908@aol.com or Tel. 303-246-4414.

Acer ×freemanii
(AY-sir free-MAN-ee)
Freeman Maple



Acer negundo

(AY-sir nuh-GOON-doe)

Box Elder



Acer platanoides
(AY-sir plat-an-OY-deez)
Norway Maple



© Ray Daugherty

Acer rubrum
(AY-sir ROO-brum)
Red Maple



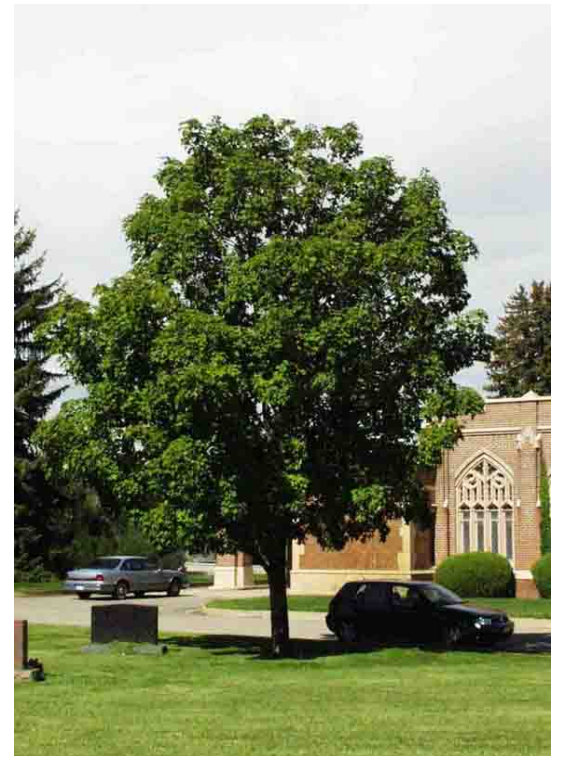
© Ray Daugherty

Acer saccharinum
(AY-sir SAK-har-eye-num)
Silver Maple



© Ray Daugherty

Acer saccharum
(AY-sir SAK-har-um)
Sugar Maple



© Ray Daugherty

Aesculus glabra
(ESS-kew-lus GLAB-rah)
Ohio Buckeye



Aesculus hippocastanum
(ESS-kew-lus hippo-CAS-tuh-num)
Common Horsechestnut



© Ray Daugherty

Catalpa speciosa

(kah-TAL-pah spee-see-OH-sah)

Western or Northern Catalpa



© Ray Daugherty

Celtis occidentalis

(KELT-us ox-uh-den-TAL-us)

Western or Common Hackberry



© Ray Daugherty

Fraxinus americana

(FRAX-in-us ah-mer-ih-KAY-nah)

White Ash



Fraxinus nigra
(FRAX-in-us NIGH-gra)
Fall Gold or Black Ash



© Keith Williamson

Fraxinus pennsylvanica
(FRAX-in-us penn-sill-VAN-i-ca)
Green Ash



© Ray Daugherty

Gleditsia triacanthos

(gluh-DIT-see-uh try-uh-KAN-thos)

Honeylocust



© Ray Daugherty

Gymnocladus dioica
(jim-NO-clad-us dye-oh-EYE-kus)
Kentucky Coffeetree



© Ray Daugherty

Juglans nigra
(JOO-glans NIGH-gra)
Walnut, Black



© Ray Daugherty

Platanus spp.

(PLAT-an-us)

Sycamore/Planetree



Populus xacuminata
(POP-yew-lus a-kew-min-ah-tah)
Cottonwood, Lanceleaf



© Ray Daugherty

Populus alba

(Pop-yew-lus AL-bah)

Silver or White Poplar



© Ray Daugherty

Populus angustifolia
(POP-yew-lus an-GUST-i-fo-lia)
Narrowleaf Cottonwood



© Ray Daugherty

Populus deltoides
(POP-yew-lus dell-TOY-deez)
Eastern Cottonwood



© Ray Daugherty

Populus nigra 'Italica'
(POP-yew-lus NIGH-gra)
Poplar, Lombardy



© Ray Daugherty

Populus sargentii
(POP-yew-lus sar-JENT-ee-i)
Cottonwood, Plains

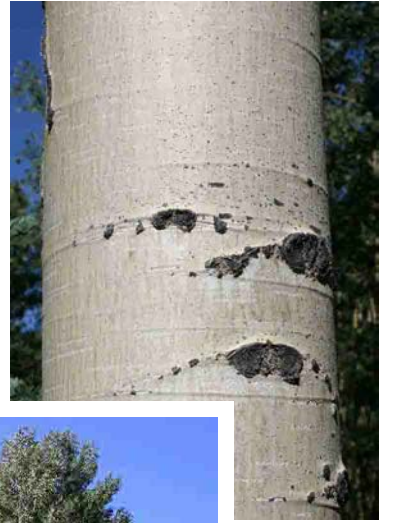


© Ray Daugherty

Populus tremuloides

(POP-yew-lus trem-yew-LOY-deez)

Aspen



Quercus bicolor
(KWER-kus BYE-color)
Swamp White Oak



© Ray Daugherty

Quercus macrocarpa
(KWER-kus mak-roe-KAR-pah)
Bur Oak



© Ray Daugherty

Quercus robur
(KWER-kus ROW-burr)
English Oak



© Ray Daugherty

Quercus rubra
(KWER-kus ROO-brah)
Northern Red Oak



© Ray Daugherty

Salix alba 'Tristis'
(SAY-lix AL-bah Tris-TISS)
Willow, Weeping Golden



© Ray Daugherty

Salix alba vitellina

(SAY-lix AL-bah vih-tell-EEN-uh)

Willow, Russian Golden



© Ray Daugherty

Salix matsudana 'Umbraculifera'

(SAY-lix mat-zoo-DON-nuh Um-BRACK-yew-luh-fair-uh)

Willow, Globe



© Ray Daugherty

Tilia americana

(TILL-ee-uh ah-mer-ih-KAY-nah)

Linden, American



© Ray Daugherty

Tilia cordata

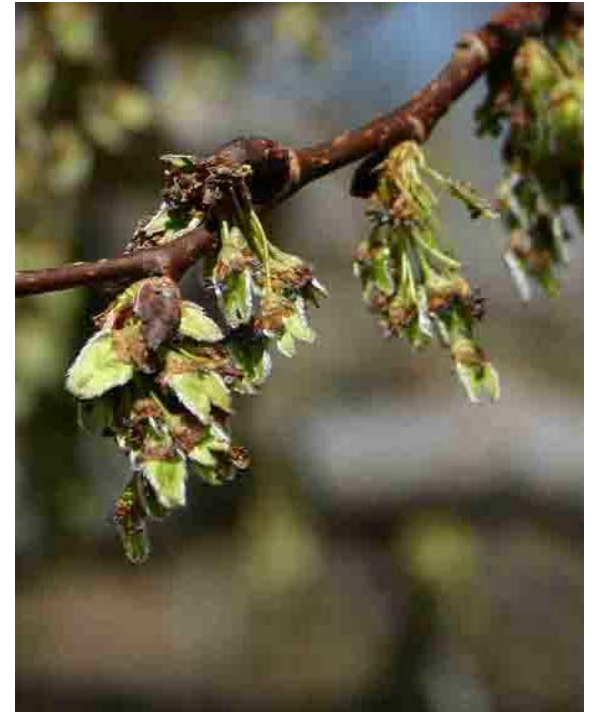
(TILL-ee-uh core-DAY-tuh)

Linden, Littleleaf



© Ray Daugherty

Ulmus cultivars
(UL-mus)
Elm



© Ray Daugherty