

# CCNP Study Aids:

Shade Trees that May Appear on the CCNP exam.

These materials were donated by the author to the CNGA in recognition of scholarships given by the Colorado Nursery Research and Education Foundation (CNREF) in support of students at FRCC.

If you find these materials helpful, please donate to CNREF today!

Non-exclusive use of the following photos/materials is hereby granted to the Colorado Nursery & Greenhouse Association for use by individuals seeking Certification as a Colorado Certified Nursery Professional. The Author reserves all rights to these Images/Materials. Users of this presentation do not acquire any copyright, ownership or equivalent rights in or to any Images. Users must contact the Author if they wish to use any of these photos for other purposes.

Author:

Ray Daugherty, CCNP No. 369,

Horticulture & Landscape Technologies Faculty, Front Range Community College

rdaugh4908@aol.com or Tel. 303-246-4414.

*Acer ×freemanii*  
(AY-sir free-MAN-ee)  
Freeman Maple



© Ray Daugherty

*Acer negundo*

(AY-sir nuh-GOON-doe)

Box Elder



© Ray Daugherty

*Acer platanoides*  
(AY-sir plat-an-OY-deez)  
Norway Maple



© Ray Daugherty



*Acer rubrum*

(AY-sir ROO-brum)

Red Maple



© Ray Daugherty

*Acer saccharinum*  
(AY-sir SAK-har-eye-num)  
Silver Maple

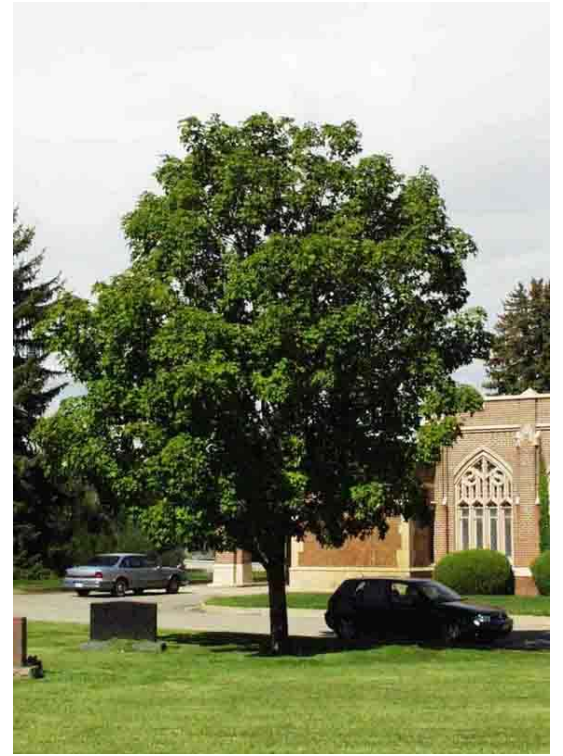


© Ray Daugherty

*Acer saccharum*  
(AY-sir SAK-har-um)  
Sugar Maple



© Ray Daugherty



*Aesculus glabra*  
(ESS-kew-lus GLAB-rah)  
Ohio Buckeye



© Ray Daugherty



*Aesculus hippocastanum*  
(ESS-kew-lus hip-po-CAS-tuh-num)  
Common Horsechestnut



© Ray Daugherty

*Catalpa speciosa*

(kah-TAL-pah spee-see-OH-sah)

Western or Northern Catalpa



© Ray Daugherty

*Celtis occidentalis*

(KELT-us ox-uh-den-TAL-us)

Western or Common Hackberry



© Ray Daugherty

*Fraxinus americana*

(FRAX-in-us ah-mer-ih-KAY-nah)

White Ash



© Ray Daugherty



*Fraxinus nigra*

(FRAX-in-us NIGH-gra)

Fall Gold or Black Ash



© Keith Williamson

*Fraxinus pennsylvanica*  
(FRAX-in-us penn-sill-VAN-i-ca)  
Green Ash



© Ray Daugherty

*Gleditsia triacanthos*

(gluh-DIT-see-uh try-uh-KAN-thos)

Honeylocust



© Ray Daugherty

*Gymnocladus dioica*

(jim-NO-clad-us dye-oh-EYE-kus)

Kentucky Coffeetree



© Ray Daugherty



*Juglans nigra*  
(JOO-glans NIGH-gra)  
Walnut, Black



© Ray Daugherty

*Platanus* spp.  
(PLAT-an-us)  
Sycamore/Planetree

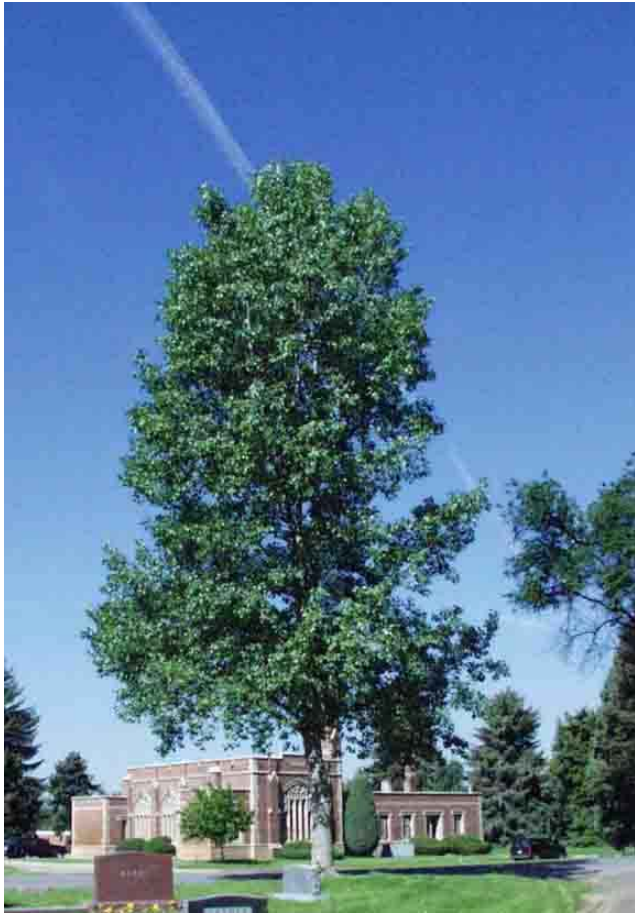


© Ray Daugherty

*Populus ×acuminata*

(POP-yew-lus a-kew-min-ah-tah)

Cottonwood, Lanceleaf



© Ray Daugherty

*Populus alba*

(Pop-yew-lus AL-bah)

Silver or White Poplar



© Ray Daugherty



*Populus angustifolia*

(POP-yew-lus an-GUST-i-fo-lia)

Narrowleaf Cottonwood



© Ray Daugherty

*Populus deltoides*

(POP-yew-lus dell-TOY-deez)

Eastern Cottonwood



© Ray Daugherty

*Populus nigra* 'Italica'  
(POP-yew-lus NIGH-gra)  
Poplar, Lombardy



© Ray Daugherty

*Populus sargentii*

(POP-yew-lus sar-JENT-ee-i)

Cottonwood, Plains



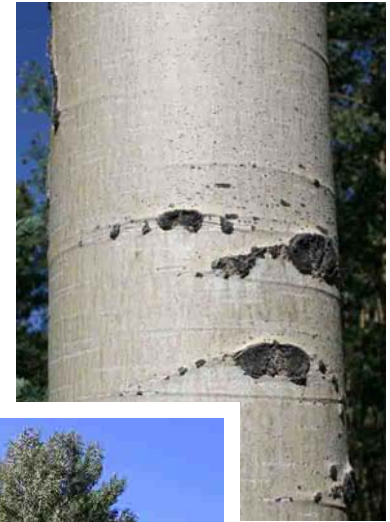
© Ray Daugherty



*Populus tremuloides*

(POP-yew-lus trem-yew-LOY-deez)

Aspen



© Ray Daugherty

*Quercus bicolor*  
(KWER-kus BYE-color)  
Swamp White Oak



© Ray Daugherty

*Quercus macrocarpa*

(KWER-kus mak-roe-KAR-pah)

Bur Oak



© Ray Daugherty

*Quercus robur*

(KWER-kus ROW-burr)

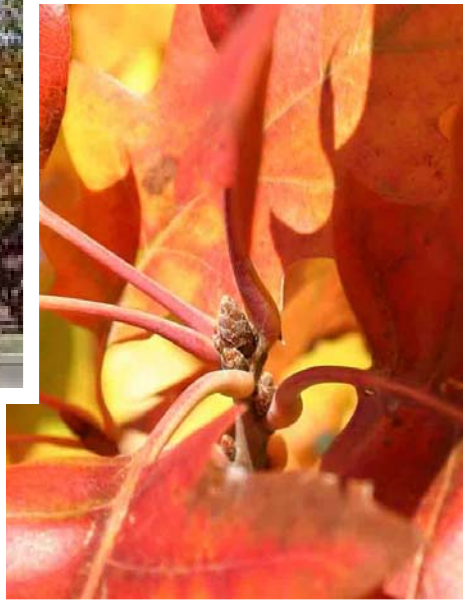
English Oak



© Ray Daugherty



*Quercus rubra*  
(KWER-kus ROO-brah)  
Northern Red Oak



© Ray Daugherty

*Salix alba* 'Tristis'  
(SAY-lix AL-bah Tris-TISS)  
Willow, Weeping Golden



© Ray Daugherty

*Salix alba vitellina*

(SAY-lix AL-bah vih-tell-EEN-uh)

Willow, Russian Golden



© Ray Daugherty

*Salix matsudana* 'Umbraculifera'

(SAY-lix mat-zoo-DON-nuh Um-BRACK-yew-luh-fair-uh)

Willow, Globe



© Ray Daugherty



*Tilia americana*

(TILL-ee-uh ah-mer-ih-KAY-nah)

Linden, American



© Ray Daugherty

*Tilia cordata*

(TILL-ee-uh core-DAY-tuh)

Linden, Littleleaf



© Ray Daugherty

*Ulmus* cultivars  
(UL-mus)  
Elm



© Ray Daugherty